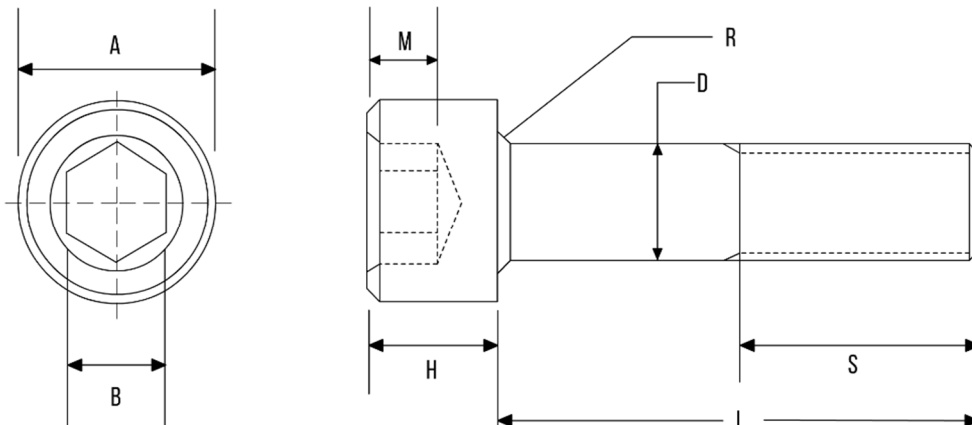


SOCKET HEAD CAPSCREWS (1960 SERIES) - ASME B18.3

Socket Capscrews are available off the shelf in B7 & L7. These are available in Imperial and Metric threads and can be coated or plated to suit customer requirements as requested. Other grades of material are manufactured to order.



DIA	A	H	B (NOM)	M (MIN)	R (MIN)	S (MIN)
1/4	0.365 - 0.375	0.244 - 0.250	3/16 (0.188)	0.120	0.007	1.000
5/16	0.457 - 0.469	0.306 - 0.312	1/4 (0.250)	1.151	0.009	1.120
3/8	0.550 - 0.562	0.368 - 0.375	5/16 (0.312)	0.182	0.012	1.250
7/16	0.642 - 0.656	0.430 - 0.438	3/8 (0.375)	0.213	0.014	1.380
1/2	0.735 - 0.750	0.492 - 0.500	3/8 (0.375)	0.245	0.016	1.500
9/16	0.827 - 0.843	0.554 - 0.562	7/16 (0.438)	0.276	0.021	1.630
5/8	0.921 - 0.938	0.616 - 0.625	1/2 (0.500)	0.307	0.021	1.750
3/4	1.107 - 1.125	0.740 - 0.750	5/8 (0.625)	0.370	0.025	2.000
7/8	1.293 - 1.312	0.864 - 0.875	3/4 (0.750)	0.432	0.031	2.250
1	1.479 - 1.500	0.988 - 1.000	3/4 (0.750)	0.495	0.034	2.500
1-1/8	1.665 - 1.688	1.111 - 1.125	7/8 (0.875)	0.557	0.039	2.810
1-1/4	1.852 - 1.875	1.236 - 1.250	7/8 (0.875)	0.620	0.044	3.120
1-3/8	2.038 - 2.062	1.360 - 1.375	1 (1.000)	0.682	0.048	3.440
1-1/2	2.224 - 2.250	1.485 - 1.500	1 (1.000)	0.745	0.052	3.750

- All dimensions are in inches