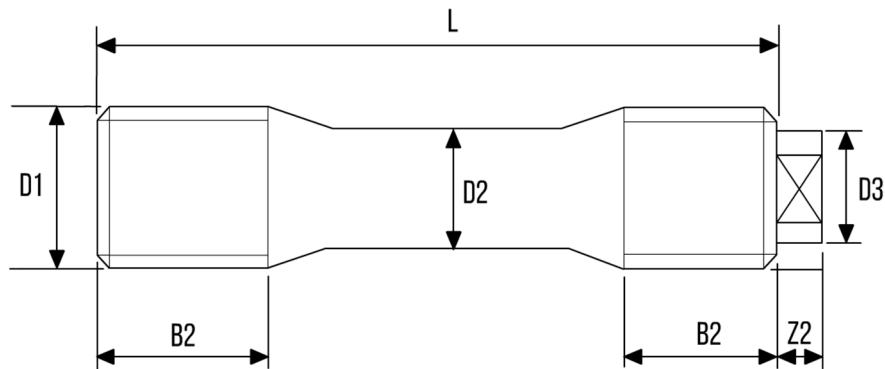


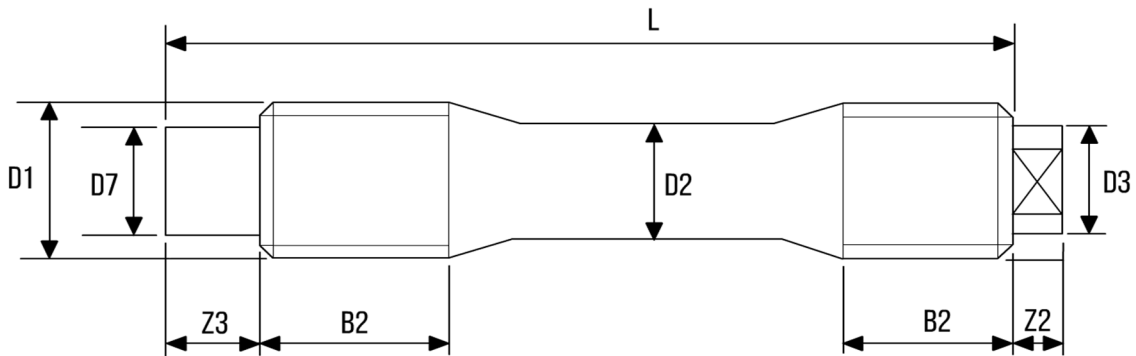
STUDS WITH REDUCED SHANK - DIN2510-K (SHORT THREAD)



D1 (Diameter)	Pitch	D2	D3	B2	Z2
M12	1.75	8.5	8.0	13.0	4.0
M16	2.00	12.0	12.0	16.0	5.0
M20	2.50	15.0	14.0	20.0	6.0
M24	3.00	18.0	14.0	24.0	6.0
M27	3.00	20.5	18.0	27.0	6.0
M30	3.50	23.0	18.0	30.0	6.0
M33	3.50	25.5	25.0	33.0	9.0
M36	4.00	27.5	25.0	36.0	9.0
M39	4.00	30.5	28.0	39.0	10.0
M42	4.50	32.5	28.0	42.0	10.0
M45	4.50	35.5	32.0	45.0	11.0
M48	5.00	37.5	32.0	48.0	11.0
M52	5.00	41.0	36.0	52.0	12.0
M56	5.50	44.0	40.0	56.0	13.0

- DIN2510 Studs are manufactured to order and can be made in any material.
- DIN2510 Studs are generally supplied with DIN2510 NF Nuts

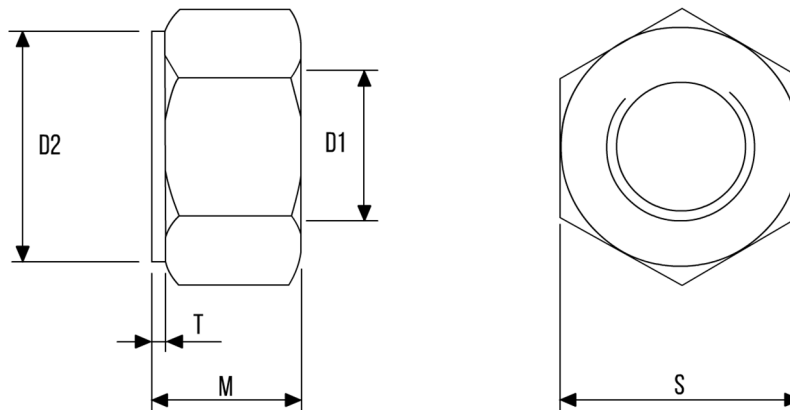
STUDS WITH REDUCED SHANK - DIN2510-KU (SHORT THREAD & SPACER)



D1 (Diameter)	Pitch	D2	D3	D7	B2	Z2	Z3
M12	1.75	8.5	8.0	8.0	13.0	4.0	11.0
M16	2.00	12.0	12.0	12.0	16.0	5.0	14.0
M20	2.50	15.0	14.0	13.0	20.0	6.0	16.0
M24	3.00	18.0	14.0	16.0	24.0	6.0	17.0
M27	3.00	20.5	18.0	18.0	27.0	6.0	19.0
M30	3.50	23.0	18.0	21.0	30.0	6.0	19.0
M33	3.50	25.5	25.0	24.0	33.0	9.0	21.0
M36	4.00	27.5	25.0	26.0	36.0	9.0	23.0
M39	4.00	30.5	28.0	30.0	39.0	10.0	23.0
M42	4.50	32.5	28.0	32.0	42.0	10.0	24.0
M45	4.50	35.5	32.0	34.0	45.0	11.0	25.0
M48	5.00	37.5	32.0	37.0	48.0	11.0	26.0
M52	5.00	41.0	36.0	40.0	52.0	12.0	26.0
M56	5.50	44.0	40.0	45.0	56.0	13.0	28.0

- DIN2510 Studs are manufactured to order and can be made in any material.
- DIN2510 Studs are generally supplied with DIN2510 NF Nuts

STANDARD NUTS - DIN2510-NF



D1 (Diameter)	Pitch	D2	M	T	S
M12	1.75	21.0	12.0	2.0	22.0
M16	2.00	26.0	16.0	2.0	27.0
M20	2.50	31.0	20.0	2.0	32.0
M24	3.00	35.0	24.0	3.0	36.0
M27	3.00	40.0	27.0	3.0	41.0
M30	3.50	45.0	30.0	3.0	46.0
M33	3.50	49.0	33.0	3.0	50.0
M36	4.00	53.5	36.0	3.0	55.0
M39	4.00	58.5	39.0	3.0	60.0
M42	4.50	63.5	42.0	3.0	65.0
M45	4.50	68.5	45.0	3.0	70.0
M48	5.00	73.5	48.0	4.0	75.0
M52	5.00	78.5	52.0	4.0	80.0
M56	5.50	83.5	56.0	4.0	85.0

- DIN2510-NF is the standard form of nut to suit DIN2510 studs.
- Some materials are available as standard but other materials are manufactured to suit stud material.