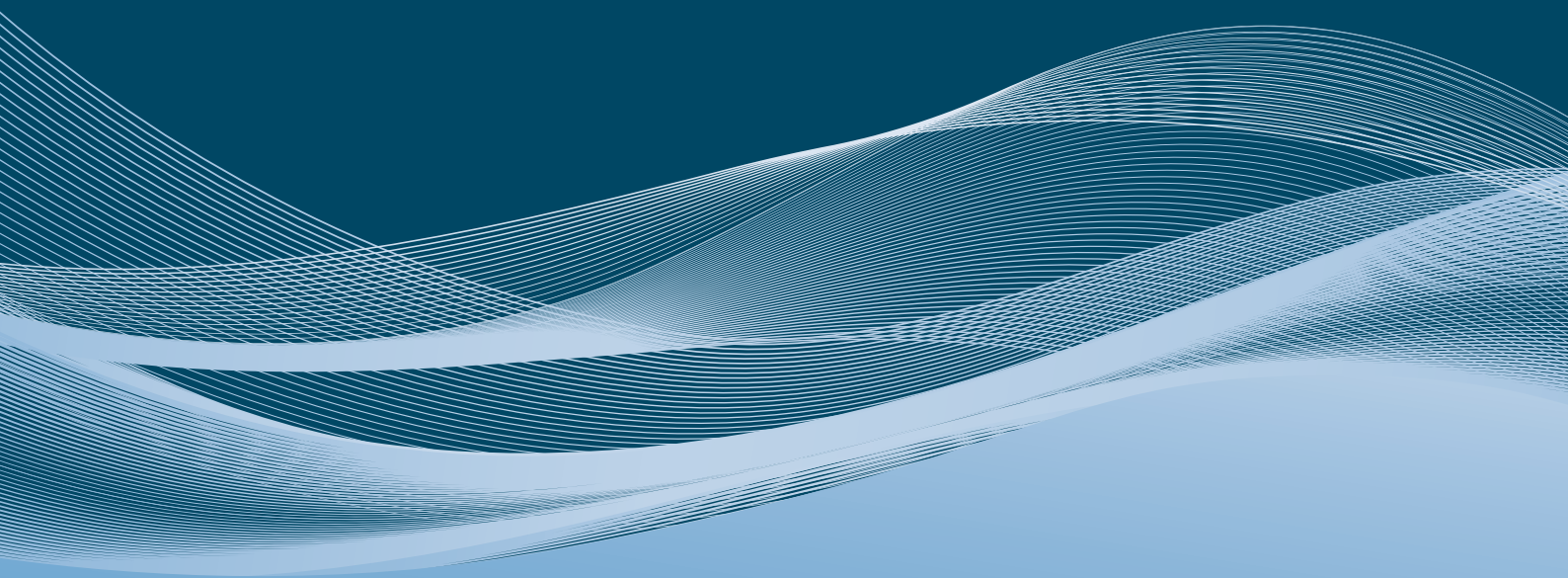


---

ELIMINATE CORROSION AT PIPE SUPPORTS

**I-ROD<sup>®</sup>**

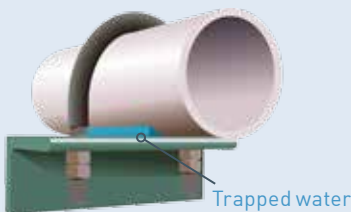
PRODUCT  
CATALOGUE



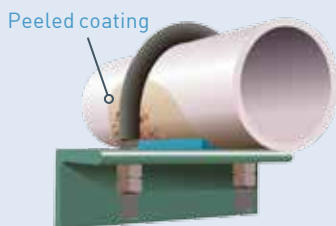
## INDEX

- 3 How to order I-Rod®
- 4 Galvanised Nu-Bolts™
- 5 Cut and drilled I-Rod®
- 6 SS316 and Sermagard™ Nu-Bolts™
- 7 Non-gripping I-Rod® and Nu-Bolts™
- 8 I-Rod® by the foot; nuts, washers, tape
- 9 U-bolts with polyshrink
- 10 I-Rod® Clips for 360° clamps
- 11 I-Rod® Clips for 120° clamps
- 11 Notched I-Rod®
- 12 I-Rod® installation tips

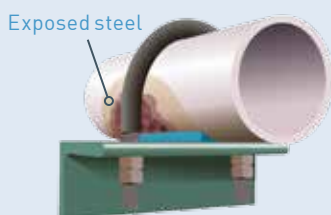
## WHAT CAUSES CREVICE CORROSION?



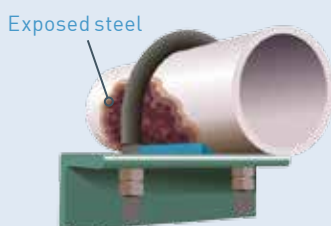
1. Water becomes trapped in the crevice between pipe and support.



2. Coatings are put in immersion service; they soften and fail.



3. Bare steel is exposed to oxygenated water, starting corrosion.



4. Corrosion undercuts paint; localised wall loss on pipe begins.

# I-ROD®

## ENDS CORROSION AT PIPE SUPPORTS

Corrosion at pipe supports is one of the leading causes of process piping failures, which can have potentially catastrophic results.

All styles of pipe supports – including beam supports and pipe saddles – create crevices where water is trapped and held in constant contact with the pipe surface. Once corrosion starts in these pockets, it can quickly undercut the paint film and rapidly cause wall loss as it expands from the crevice.

If these conditions are not addressed, entire sections of pipe can fail and require replacement. Deepwater developed the I-Rod® pipe-support system specifically to ensure longer, safer lives for pipes by eliminating crevices between pipes and supports.

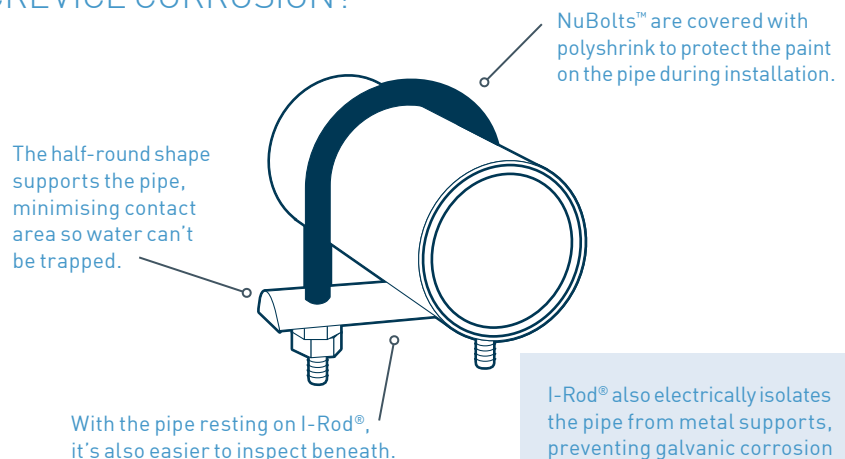


Above: the result of crevice corrosion on a pipe. Trapped moisture has caused wall loss that could result in catastrophic failure.



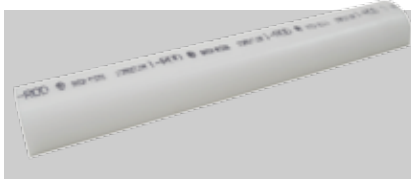
I-Rod® eliminates the crevice by minimising the contact area and allowing any moisture to evaporate. It's also much easier to inspect.

## HOW DOES I-ROD® PREVENT CREVICE CORROSION?



# HOW TO ORDER

## I-ROD®



I-Rod® ends corrosion at pipe supports.

Using the list to the right, determine pipe size, maximum operating temperature, U-bolt finish and weight load for each I-Rod® application.

## DETERMINING I-ROD® LOAD VALUES

The table shows conservative estimates of the total weight of a metre of pipe filled with water. Multiply this number by your support spacing to get total weight loading, then select number of I-Rods® you'll need. Use 1" I-Rod® if pipe diameter is 8" or less; 1 1/2" I-Rod® is recommended for piping 10" or greater in diameter. **Do not mix rod sizes.**

1" I-Rod:	3,600 kg
1 1/2" I-Rod:	4,500 kg

## WEIGHT (KG) PER METRE OF PIPING FULL OF WATER

Nominal pipesize	Outside diameter	Std	Sch 40	X-Strong	Sch 80	Sch 120	Sch 140	Sch 160	X-Strong
5.1 cm	6.1 cm	9	9	11	11			14	17
7.7	8.9	18	18	21	21			27	35
10.2	11.5	27	27	33	33	39		44	54
15.3	16.9	50	51	66	66	76		90	102
20.4	22.0	76	81	103	103	128	139	149	146
25.4	27.4	114	120	140	155	192	213	231	213
30.5	32.4	155	164	181	215	270	291	320	270
35.6	35.6	182	195	209	258	323	353	380	
40.7	40.7	225	255	255	334	417	462	495	
45.8	45.8	273	322	306	420	527	572	623	
50.8	50.8	323	389	361	515	643	666	765	
61.0	61.0	438	551	484	736	931	1009	1097	
66.1	66.1	502		551					
71.2	71.2	570		624					
76.2	76.2	642		700					
91.5	91.5	883	1088	951					

## DETERMINING I-ROD® LOAD VALUES



### Pipe size

Measure the outer diameter of the pipe. Nu-Bolts™ are available in standard sizes that fit 1/2" to 36" diameters. Custom sizes are available. Pipes 8" and smaller use 1" I-Rod®; those 10" and larger require 1 1/2" I-Rod®.



### Temperature

Determine your pipe's maximum operating temperature. Use standard I-Rod® up to 83° C (181° F), I-Rod® HT up to 171° C (340° F), and specify PEEK™ for temps up to 249° C (480° F). The maximum operating temperature for polyshrink on U-Bolts is 110° C (230° F).



### U-Bolt finish

Standard Nu-Bolts™ come with a long-lasting, hot-dip-galvanised finish. Alternate options include 316 SS or an ultra-durable Sermagard™ aluminum-ceramic coating for the harshest environments.



### Weight load

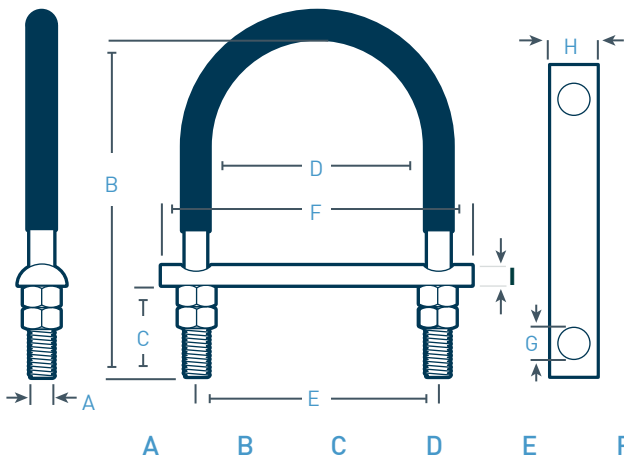
Use the table on the left to estimate the weight on the I-Rod® at each pipe support. Use up to three strips of I-Rod® at each support to meet load requirements. Pipes 8" and smaller use 1" I-Rod®; 10" and larger require 1 1/2" I-Rod®.



### I-Rod® Clips

Measure the width of your saddle clamp, pipe hanger or support cradle; the I-Clip™ snaps over these edges.

GALVANISED NU-BOLT™



**Includes:**

- U-bolt with polyshrink
- Four nuts
- Cut and drilled I-Rod®

Note: Nu-Bolts are shipped unassembled; pre-assembled Nu-Bolts are available for an additional 25% charge.



With I-Rod® (white)

Max temp: 83° C

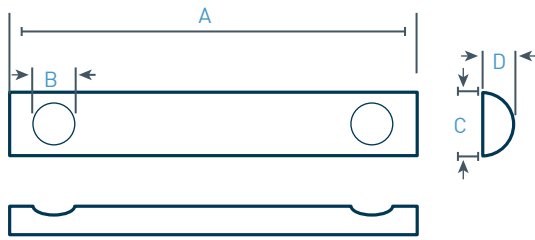


With I-Rod® HT (amber)

Max temp: 171° C

Nominal pipe size	Bolt diameter	U-bolt height	Thread length	Inside gap	Leg center	I-Rod length	I-Rod hole diameter	I-Rod size	I-Rod height	Part number	Part number
1/2"	1/4"	3 1/4"	2 3/8"	15/16"	1 3/16"	2 1/2"	3/8"	3/4"	5/16"	NUB0045	NUB0431
1/2	3/8	3 1/4	2 3/8	15/16	1 3/16	2 1/2	1/2	1	7/16	NUB0046	NUB0193
3/4	1/4	3 5/16	2 3/8	1 1/8	1 3/8	3	3/8	3/4	5/16	NUB0071	NUB0408
3/4	3/8	3 5/16	2 3/8	1 1/8	1 1/2	3	1/2	1	7/16	NUB0074	NUB0398
1	1/4	3 7/16	2 3/8	1 3/8	1 5/8	3	3/8	3/4	5/16	NUB0047	NUB0198
1	3/8	3 7/16	2 3/8	1 3/8	1 3/4	3	1/2	1	7/16	NUB0001	NUB0194
1 1/4	3/8	3 3/4	2 1/2	1 11/16	2 1/8	3 1/2	1/2	1	7/16	NUB0013	NUB0409
1 1/2	3/8	4	2 1/2	2	2 3/8	4	1/2	1	7/16	NUB0052	NUB0196
2	3/8	4 1/2	2 1/2	2 7/16	2 13/16	4 1/2	1/2	1	7/16	NUB0009	NUB0199
2 1/2	1/2	5 1/4	3	2 15/16	3 7/16	5	5/8	1	7/16	NUB0017	NUB0432
3	1/2	5 13/16	3	3 9/16	4 1/16	6	5/8	1	7/16	NUB0057	NUB0200
4	1/2	6 13/16	3	4 9/16	5 1/16	7	5/8	1	7/16	NUB0060	NUB0195
5	1/2	7 13/16	3	5 5/8	6 1/8	8	5/8	1	7/16	NUB0063	NUB0433
6	5/8	9 1/2	3 3/4	6 3/4	7 3/8	9	11/16	1	7/16	NUB0064	NUB0067
8	5/8	11 1/2	3 3/4	8 3/4	9 3/8	11	11/16	1	7/16	NUB0077	NUB0079
10	3/4	13 13/16	4	10 7/8	11 5/8	13 1/2	7/8	1 1/2	11/16	NUB0003	NUB0224
12	7/8	16 1/16	4 1/4	12 7/8	13 3/4	16	1	1 1/2	11/16	NUB0085	NUB0225
14	7/8	17 5/16	4 1/4	14 1/8	15	17	1	1 1/2	11/16	NUB0091	NUB0434
16	7/8	19 5/16	4 1/4	16 1/8	17	19	1	1 1/2	11/16	NUB0005	NUB0435
18	1	21 11/16	4 3/4	18 1/8	19 1/8	21 1/2	1 1/8	1 1/2	11/16	NUB0098	NUB0226
20	1	23 11/16	4 3/4	20 1/8	21 1/8	23 1/2	1 1/8	1 1/2	11/16	NUB0101	NUB0436
24	1	27 11/16	4 3/4	24 1/8	25 1/8	27 1/2	1 1/8	1 1/2	11/16	NUB0011	NUB0227
28	1	31 11/16	4 3/4	28 1/8	29 1/8	31 1/2	1 1/8	1 1/2	11/16	NUB0106	Call
30	1	33 11/16	4 3/4	30 1/8	31 1/8	33 1/2	1 1/8	1 1/2	11/16	NUB0107	NUB0437
36	1	39 11/16	4 3/4	36 1/8	37 1/8	39 1/2	1 1/8	1 1/2	11/16	NUB0109	NUB0438

## CUT AND DRILLED I-ROD® WITHOUT U-BOLT



I-Rod® (white)

Max temp: 83° C



I-Rod® HT (amber)

Max temp: 171° C

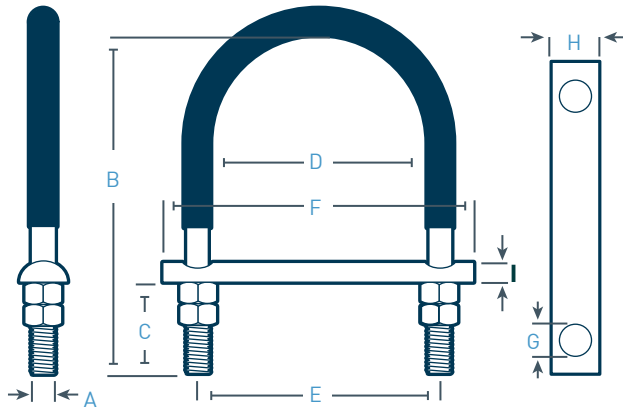


I-Rod® PEEK (tan)

Max temp: 249° C

	A	B	C	D				
Nominal pipe size	Bolt diameter	I-Rod length	I-Rod hole diameter	I-Rod size	I-Rod height	Part number	Part number	Part number
1/2"	1/4"	2 1/2"	3/8"	3/4"	5/16"	ROD0105	ROD0141	ROD0332
1/2	3/8	2 1/2	1/2	1	7/16	ROD0003	ROD0159	ROD0333
3/4	1/4	3	3/8	3/4	5/16	ROD0013	ROD0148	ROD0334
3/4	3/8	3	1/2	1	7/16	ROD0107	ROD0298	ROD0335
1	1/4	3	3/8	3/4	5/16	ROD0002	ROD0160	ROD0336
1	3/8	3	1/2	1	7/16	ROD0001	ROD0106	ROD0295
1 1/4	3/8	3 1/2	1/2	1	7/16	ROD0076	ROD0232	ROD0337
1 1/2	3/8	4	1/2	1	7/16	ROD0005	ROD0149	ROD0338
2	3/8	4 1/2	1/2	1	7/16	ROD0009	ROD0087	ROD0303
2 1/2	1/2	5	5/8	1	7/16	ROD0022	ROD0233	ROD0339
3	1/2	6	5/8	1	7/16	ROD0012	ROD0090	ROD0340
4	1/2	7	5/8	1	7/16	ROD0014	ROD0096	ROD0341
5	1/2	8	5/8	1	7/16	ROD0015	ROD0299	ROD0342
6	5/8	9	11/16	1	7/16	ROD0074	ROD0101	ROD0343
8	5/8	11	11/16	1	7/16	ROD0017	ROD0104	ROD0344
10	3/4	13 1/2	7/8	1 1/2	11/16	ROD0004	ROD0079	ROD0345
12	7/8	16	1	1 1/2	11/16	ROD0006	ROD0081	ROD0346
14	7/8	17	1	1 1/2	11/16	ROD0007	ROD0243	ROD0347
16	7/8	19	1	1 1/2	11/16	ROD0008	ROD0300	ROD0296
18	1	21 1/2	1 1/8	1 1/2	11/16	ROD0083	ROD0171	ROD0348
20	1	23 1/2	1 1/8	1 1/2	11/16	ROD0010	ROD0140	ROD0349
24	1	27 1/2	1 1/8	1 1/2	11/16	ROD0011	ROD0172	ROD0350
28	1	31 1/2	1 1/8	1 1/2	11/16	ROD0088	Call	Call
30	1	33 1/2	1 1/8	1 1/2	11/16	ROD0092	ROD0301	ROD0351
36	1	39 1/2	1 1/8	1 1/2	11/16	ROD0093	ROD0302	ROD0352

STAINLESS STEEL AND SERMAGARD™ NU-BOLTS™



**316 Stainless Nu-Bolt™ with I-Rod® (white)**

- Stainless U-bolt
- Standard I-Rod®
- 83° C max temp
- Polyshrink
- Four nuts



**316 Stainless Nu-Bolt™ with I-Rod® HT(amber)**

- Stainless U-bolt
- I-Rod® HT
- 171° C max temp
- Polyshrink
- Four nuts

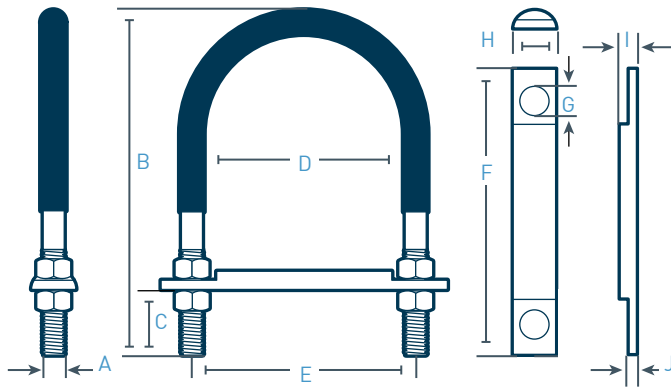


**Sermagard® Nu-Bolt™ with I-Rod® (white)**

- Carbon steel U-bolt with Sermagard™
- Standard I-Rod®
- 83° C max temp
- Polyshrink
- Four nuts

	A	B	C	D	E	F	G	H	I			
Nominal pipe size	Bolt Ø	U-bolt height	Thread length	Inside gap	Leg center	I-Rod length	I-Rod hole Ø	I-Rod size	I-Rod height	Part number	Part number	Part number
1/2"	1/4"	3 1/4"	2 3/8"	15/16"	1 3/16"	2 1/2"	3/8"	3/4"	5/16"	NUB0113	NUB0447	NUB0415
1/2	3/8	3 1/4	2 3/8	1 1/8	1 5/16	2 1/2	1/2	1	7/16	Call	NUB0448	Call
3/4	1/4	3 5/16	2 3/8	1 1/8	1 3/8	3	3/8	3/4	5/16	NUB0123	NUB0449	NUB0149
3/4	3/8	3 5/16	2 3/8	1 1/8	1 1/2	3	1/2	1	7/16	Call	NUB0450	Call
1	1/4	3 7/16	2 3/8	1 3/8	1 5/8	3	3/8	3/4	5/16	NUB0114	NUB0451	NUB0491
1	3/8	3 7/16	2 3/8	1 3/8	1 3/4	3	1/2	1	7/16	NUB0038	NUB0197	NUB0133
1 1/2	3/8	4	2 1/2	2	2 3/8	4	1/2	1	7/16	NUB0116	NUB0417	NUB0135
2	3/8	4 1/2	2 1/2	2 7/16	2 13/16	4 1/2	1/2	1	7/16	NUB0018	NUB0418	NUB0137
2 1/2	1/2	5 1/4	3	2 15/16	3 7/16	5	5/8	1	7/16	NUB0442	Call	NUB0440
3	1/2	5 13/16	3	3 9/16	4 1/16	6	5/8	1	7/16	NUB0119	NUB0452	NUB0012
4	1/2	6 13/16	3	4 9/16	5 1/16	7	5/8	1	7/16	NUB0120	NUB0419	NUB0144
5	1/2	7 13/16	3	5 5/8	6 1/8	8	5/8	1	7/16	NUB0277	NUB0453	NUB0441
6	5/8	9 1/2	3 3/4	6 3/4	7 3/8	9	11/16	1	7/16	NUB0121	NUB0454	NUB0147
8	5/8	11 1/2	3 3/4	8 3/4	9 3/8	11	11/16	1	7/16	NUB0125	NUB0455	NUB0150
10	3/4	13 13/16	4	10 7/8	11 5/8	13 1/2	7/8	1 1/2	11/16	NUB0127	NUB0456	NUB0152
12	7/8	16 1/16	4 1/4	12 7/8	13 3/4	16	1	1 1/2	11/16	NUB0128	NUB0457	NUB0155
14	7/8	17 5/16	4 1/4	14 1/8	15	17	1	1 1/2	11/16	NUB0390	NUB0458	NUB0157
16	7/8	19 5/16	4 1/4	16 1/8	17	19	1	1 1/2	11/16	NUB0446	NUB0459	NUB0006
18	1	21 11/16	4 3/4	18 1/8	19 1/8	21 1/2	1 1/8	1 1/2	11/16	NUB0232	NUB0460	NUB0159
20	1	23 11/16	4 3/4	20 1/8	21 1/8	23 1/2	1 1/8	1 1/2	11/16	NUB0130	NUB0462	NUB0160
24	1	27 11/16	4 3/4	24 1/8	25 1/8	27 1/2	1 1/8	1 1/2	11/16	NUB0131	Call	NUB0161
30	1	33 11/16	4 3/4	30 1/8	31 1/8	33 1/2	1 1/8	1 1/2	11/16	Call	Call	Call

## NON-GRIPPING I-ROD® WITH FLATS AND NU-BOLT™



**Non-gripping  
I-Rod® (white)**

Max temp: 83° C

**Non-gripping  
Nu-Bolt™(white)**

- Galvanised U-bolt
- Standard I-Rod®
- 83° C max temp
- Polyshrink
- Four nuts

	A	B	C	D	E	F	G	H	I	J		
Nominal pipe size	Bolt Ø	U-bolt height	Thread length	Inside gap	Leg center	I-Rod length	I-Rod hole Ø	I-Rod size	I-Rod height	Tab thickness	Part number	Part number
1/2"	1/4"	3 1/4"	2 3/8"	15/16"	1 3/16"	2 1/2"	3/8"	3/4"	5/16"	3/16"	ROD0304	NUB0464
3/4	1/4	3 5/16	2 3/8	1 1/8	1 3/8	3	3/8	3/4	5/16	3/16	ROD0306	NUB0466
3/4	3/8	3 5/16	2 3/8	1 1/8	1 1/2	3	1/2	1	7/16	1/4	ROD0307	NUB0467
1	1/4	3 7/16	2 3/8	1 3/8	1 5/8	3	3/8	3/4	5/16	3/16	ROD0308	NUB0468
1	3/8	3 7/16	2 3/8	1 3/8	1 3/4	3	1/2	1	7/16	1/4	ROD0309	NUB0469
1 1/2	3/8	4	2 1/2	2	2 3/8	4	1/2	1	7/16	1/4	ROD0311	NUB0471
2	3/8	4 1/2	2 1/2	2 7/16	2 13/16	4 1/2	1/2	1	7/16	1/4	ROD0312	NUB0472
2 1/2	1/2	5 1/4	3	2 15/16	3 7/16	5	5/8	1	7/16	1/4	ROD0313	NUB0473
3	1/2	5 13/16	3	3 9/16	4 1/16	6	5/8	1	7/16	1/4	ROD0315	NUB0475
4	1/2	6 13/16	3	4 9/16	5 1/16	7	5/8	1	7/16	1/4	ROD0316	NUB0476
5	1/2	7 13/16	3	5 5/8	6 1/8	8	5/8	1	7/16	1/4	ROD0317	NUB0477
6	5/8	9 1/2	3 3/4	6 3/4	7 3/8	9	11/16	1	7/16	1/4	ROD0318	NUB0478
8	5/8	11 1/2	3 3/4	8 3/4	9 3/8	11	11/16	1	7/16	1/4	ROD0319	NUB0479
10	3/4	13 13/16	4	10 7/8	11 5/8	13 1/2	7/8	1 1/2	11/16	3/8	ROD0320	NUB0480
12	7/8	16 1/16	4 1/4	12 7/8	13 3/4	16	1	1 1/2	11/16	3/8	ROD0321	NUB0481
14	7/8	17 5/16	4 1/4	14 1/8	15	17	1	1 1/2	11/16	3/8	ROD0322	NUB0482
16	7/8	19 5/16	4 1/4	16 1/8	17	19	1	1 1/2	11/16	3/8	ROD0323	NUB0483
18	1	21 11/16	4 3/4	18 1/8	19 1/8	21 1/2	1 1/8	1 1/2	11/16	3/8	ROD0324	NUB0484
20	1	23 11/16	4 3/4	20 1/8	21 1/8	23 1/2	1 1/8	1 1/2	11/16	3/8	ROD0325	NUB0485
24	1	27 11/16	4 3/4	24 1/8	25 1/8	27 1/2	1 1/8	1 1/2	11/16	3/8	ROD0326	NUB0486
26	1	29 11/16	4 3/4	26 1/8	27 1/8	29 1/2	1 1/8	1 1/2	11/16	3/8	Call	Call
28	1	31 11/16	4 3/4	28 1/8	29 1/8	31 1/2	1 1/8	1 1/2	11/16	3/8	Call	Call
30	1	33 11/16	4 3/4	30 1/8	31 1/8	33 1/2	1 1/8	1 1/2	11/16	3/8	ROD0328	NUB0488
36	1	39 11/16	4 3/4	36 1/8	37 1/8	39 1/2	1 1/8	1 1/2	11/16	3/8	ROD0329	NUB0489

## I-ROD® BY THE FOOT

I-Rod® by the foot is available in lengths of five feet, ten feet or one metre (3.28').



I-Rod® (white)

Max temp: 83° C



I-Rod® HT (amber)

Max temp 171° C



PEEK (tan)

Up to 249° C

Rod width	Height in inches	Length in feet	Part number	Part number	Part number
3/4"	5/16"	5'	IRD0056	IRD0357	IRD0360
1	7/16	5'	IRD0034	IRD0233	IRD0344
1 ½	11/16	5'	IRD0045	IRD0234	IRD0354
3/4	5/16	10'	IRD0220	IRD0228	IRD0361
1	7/16	10'	IRD0156	IRD0358	IRD0362
1 ½	11/16	10'	IRD0371	IRD0359	IRD0363
3/4	5/16	3.28'	IRD0055	IRD0364	IRD0365
1	7/16	3.28'	IRD0030	IRD0337	IRD0338
1 ½	11/16	3.28'	IRD0043	IRD0336	IRD0366

## HEAVY HEX NUTS



	Galvanised	316 SS	Sermagard™
Bolt diameter	Part number	Part number	Part number
1/4"	FAS0044	FAS0051	FAS0056
3/8	FAS0045	FAS0052	FAS0058
1/2	FAS0046	FAS0053	FAS0055
5/8	FAS0047	FAS0353	FAS0060
3/4	FAS0048	FAS0231	FAS0057
7/8	FAS0049	FAS0232	FAS0061
1	FAS0050	FAS0225	FAS0059

## WASHERS



	Galvanised	316 SS	Sermagard™
Bolt diameter	Part number	Part number	Part number
1/4"	FAS0155	FAS0142	FAS0130
3/8	FAS0159	FAS0145	FAS0233
1/2	FAS0154	FAS0409	FAS0129
5/8	FAS0162	FAS0410	FAS0133
3/4	FAS0157	FAS0411	FAS0132
7/8	FAS0164	FAS0412	FAS0134
1	FAS0153	Call	FAS0128

## DOUBLE-SIDED TAPE

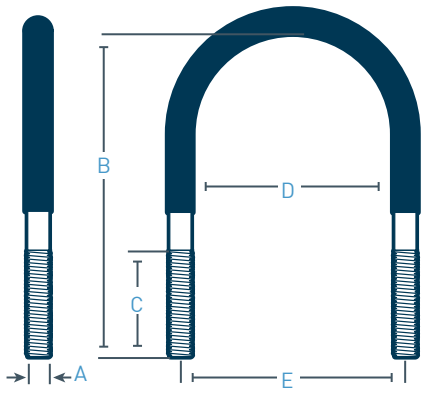
For keeping I-Rod® in place during installation.



Tape width	Length per roll	Partno. (one roll)
1"	100'	MFR0008
1.5	100'	MFR0009



## U-BOLTS WITH POLYSHRINK

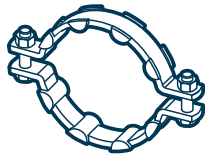


Note: Please see page eight to order nuts.

Note: Maximum operating temp for polyshrink is 110°C.



	A	B	C	D	E	Galvanised	316 SS	Sermagard™
Nominal pipe size	Bolt diameter	U-bolt height	Thread length	Inside gap	Leg center	Part number	Part number	Part number
1/2"	1/4"	3 1/4"	2 3/8"	15/16"	1 3/16"	UBT0040	UBT0438	UBT0321
1/2	3/8	3 1/4	2 3/8	15/16	1 5/16	UBT0168	Call	UBT0140
3/4	1/4	3 5/16	2 3/8	1 1/8	1 3/8	UBT0023	UBT0422	UBT0149
3/4	3/8	3 5/16	2 3/8	1 1/8	1 1/2	UBT0198	Call	UBT0256
1	1/4	3 7/16	2 3/8	1 3/8	1 5/8	UBT0033	UBT0423	UBT0035
1	3/8	3 7/16	2 3/8	1 3/8	1 3/4	UBT0036	UBT0249	UBT0039
1 1/4	3/8	3 3/4	2 1/2	1 11/16	2 1/8	UBT0004	Call	UBT0461
1 1/2	3/8	4	2 1/2	2	2 3/8	UBT0002	UBT0250	UBT0003
2	3/8	4 1/2	2 1/2	2 7/16	2 13/16	UBT0015	UBT0012	UBT0013
2 1/2	1/2	5 1/4	3	2 15/16	3 7/16	UBT0019	Call	UBT0482
3	1/2	5 13/16	3	3 9/16	4 1/16	UBT0020	UBT0424	UBT0021
4	1/2	6 13/16	3	4 9/16	5 1/16	UBT0026	UBT0381	UBT0025
5	1/2	7 13/16	3	5 5/8	6 1/8	UBT0027	Call	UBT0261
6	5/8	9 1/2	3 3/4	6 3/4	7 3/8	UBT0029	UBT0425	UBT0030
8	5/8	11 1/2	3 3/4	8 3/4	9 3/8	UBT0032	UBT0447	UBT0263
10	3/4	13 13/16	4	10 7/8	11 5/8	UBT0205	UBT0426	UBT0001
12	7/8	16 1/16	4 1/4	12 7/8	13 3/4	UBT0208	UBT0448	UBT0006
14	7/8	17 5/16	4 1/4	14 1/8	15	UBT0007	UBT0449	UBT0486
16	7/8	19 5/16	4 1/4	16 1/8	17	UBT0216	UBT0451	UBT0008
18	1	21 11/16	4 3/4	18 1/8	19 1/8	UBT0221	UBT0489	UBT0011
20	1	23 11/16	4 3/4	20 1/8	21 1/8	UBT0017	UBT0252	UBT0018
24	1	27 11/16	4 3/4	24 1/8	25 1/8	UBT0228	Call	UBT0267
28	1	31 11/16	4 3/4	28 1/8	29 1/8	UBT0458	Call	Call
30	1	33 11/16	4 3/4	30 1/8	31 1/8	UBT0233	Call	Call
36	1	39 11/16	4 3/4	36 1/8	37 1/8	UBT0236	Call	Call



## I-ROD® CLIPS FOR 360° CLAMPS

(Contact us for pricing on custom I-Rod® Clips)



A

B



I-Rod® (white)

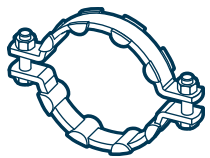
Max temp: 83° C



I-Rod® HT (amber)

Max temp: 171° C

Nominal pipe size	Inside gap (in.)	Internal radius	Clips per cradle	Part number	Part number
3"	1"	2"	4"	IRD0190	IRD0280
4	1 1/4	2 1/2	4	IRD0191	IRD0281
6	1 1/2	3 9/16	6	IRD0192	IRD0169
8	1 1/2	4 9/16	8	IRD0193	IRD0282
10	2	5 5/8	8	IRD0194	IRD0283
12	2	None	8	IRD0195	IRD0284
14	2 1/2	None	8	IRD0196	IRD0285
16-20	2 1/2	None	10	IRD0196	IRD0285
24	3	None	12	IRD0200	IRD0170
26-28	3	None	14	IRD0200	IRD0170
30-36	4	None	16	IRD0202	IRD0286



## METRIC CLIPS FOR 360° CLAMPS

(Fits Carpenter & Patterson 360° clamps)



A



I-Rod® (white)

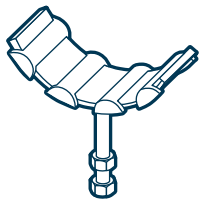
Max temp: 83° C



I-Rod® HT (amber)

Max temp: 171° C

Nominal pipe size	Inside gap	Clips per clamp	Part number	Part number
80 mm	40 mm	4	IRD0259	IRD0298
100	50	4	IRD0260	IRD0299
150	65	6	IRD0261	IRD0300
200	65	8	IRD0262	IRD0271
250	65	8	IRD0263	IRD0301
300	80	8	IRD0264	IRD0302
350	90	8	IRD0265	IRD0303
400-500	90	10	IRD0265	IRD0303
550, 600	90	12	IRD0265	IRD0303
650, 700	110	14	IRD0266	IRD0306
750, 800	110	16	IRD0266	IRD0306



## I-ROD® CLIPS FOR 120° CRADLES



A

B



I-Rod® Clips

Max temp: 83° C

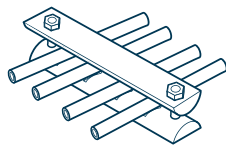


I-Rod® HT Clips

Max temp: 171° C

Nominal pipe size	Inside gap (in.)	Internal radius	Clips per cradle	Part number	Part number
3"	4"	2"	2	IRD0204	IRD0274
4	4	2 1/2	2	IRD0205	IRD0275
6	4	3 9/16	4	IRD0206	
6	6	3 9/16	N/A	IRD0314	
6	4	3 4/7	4		IRD0276
8	4	4 9/16	4	IRD0207	
8	6	4 9/16	N/A	IRD0315	
8	4	4 4/7	4		IRD0277
10	4	5 5/8	4	IRD0208	IRD0278
10	6	5 5/8	N/A	IRD0313	IRD0278
12-14	4	None	4	IRD0209	IRD0224
16-18	4	None	6	IRD0211	IRD0224
20-24	6	None	6	IRD0213	IRD0279
26-36	6	None	8	IRD0213	IRD0279
12-30	8	None	N/A	IRD0312	
12-30	11	None	N/A	IRD0323	

## NOTCHED I-ROD® BY THE FOOT



A



I-Rod® (white)

Max temp: 181° F

Rod width	Notch space	Part number
3/4"	1/2"	NRD0012
3/4	5/8	NRD0013
3/4	3/4	NRD0014
3/4	7/8	NRD0015

Note: The maximum length for a strip of notched I-Rod® is three feet.

I-Rod® products are manufactured at Deepwater's headquarters in Houston and can be ordered online at [www.deepwater.com](#) and through any of our offices worldwide:

+44 (0) 1483 600482

+44 (0) 1224 443523

+1 713 983 7117

+47 907 58 956

+61 8 6298 7396

+55 021 2252 2172

# I-ROD® INSTALLATION TIPS

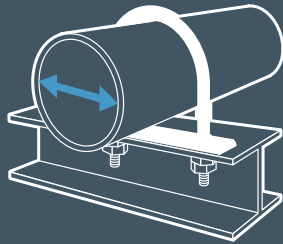
Deepwater does not provide installation of I-Rod assemblies. We also do not suggest that there's a certain correct I-Rod® installation process, as local codes, specifications and procedures for each operator and location should always be followed.

If piping has evidence of corrosion, a non-destructive evaluation of the pipe's integrity should be provided by a qualified piping engineer before attempting to lift it from the support. Here are a few tips for installing I-Rod® to help maximise its utility and durability:

1

Use the correct size I-Rod® for the pipe you're supporting.

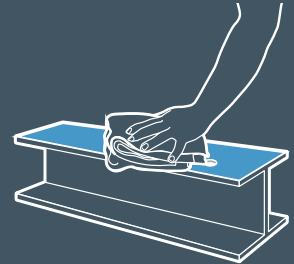
I-Rod® comes in three widths: ½", 1" and 1½". Refer to load value specifications in the table on page 3.



5

Clean the surface if you're using double-sided tape.

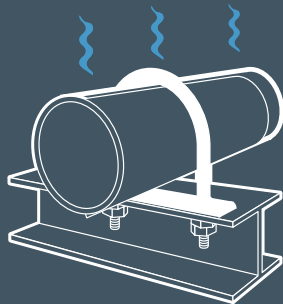
Clean the pipe support surface before applying tape to hold I-Rod® in place during installation. (Tape is on page 8.)



2

Use the correct I-Rod® material for your operating temperature.

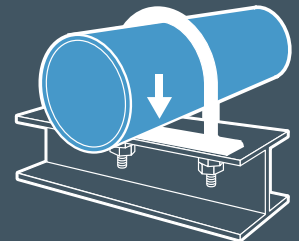
I-Rod® thermoplastic is rated for continuous temperatures up to 83° C, I-Rod® HT® is rated up to 171° C and PEEK is rated up to 249° C.



6

The rounded I-Rod® surface must be in contact with the pipe.

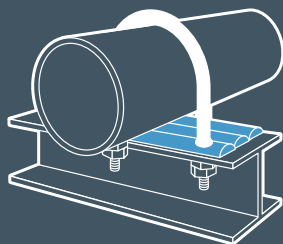
The rounded edge of I-Rod® minimises the contact area with the pipe it supports, which prevents corrosion; pipe contact with the flat side cancels the main benefit of I-Rod®.



3

Use the correct number of I-Rod® strips.

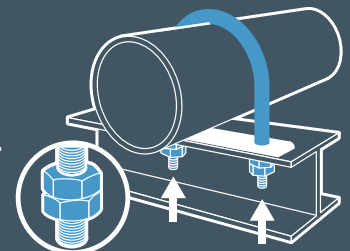
Up to three strips can be used to achieve proper weight loading. Refer to load value specifications in the table on page 3.



7

Lock the Nu-Bolts™.

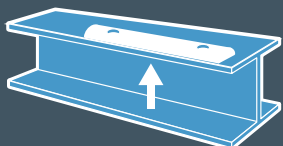
Secure Nu-Bolts™ using the two sets of nuts provided. After tightening the first nut, thread a second one onto the same shaft and tighten it down to lock the nuts.



4

There should be metal beneath the I-Rod®.

I-Rod® should be installed with rigid metal backing instead of directly on concrete, where irregular surfaces can cause uneven weight loads.



8

Add nut on top for non-gripping applications.

Slide Nu-Bolt™ over pipe and thread a nut onto each shaft before placing through holes in I-Rod® and pipe support. Adjust nut heights for desired clearance. Place nuts on bottom and tighten Nu-Bolt™.

