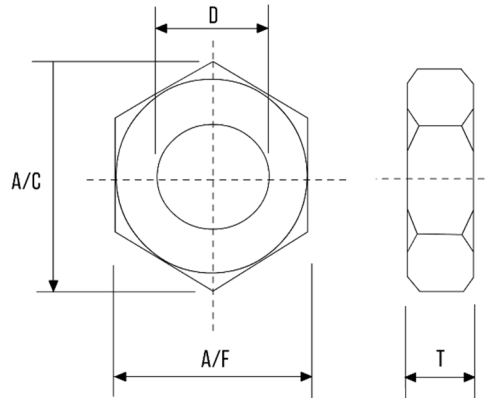


**HEX LOCK NUT (IMPERIAL) – ANSI B18.2.2 / BS1768**



| DIA   | A/F     |       |       | A/C   |       | T       |       |       |
|-------|---------|-------|-------|-------|-------|---------|-------|-------|
|       | BASIC   | MAX   | MIN   | BASIC | MAX   | MIN     | BASIC | MAX   |
| 1/4   | 7/16    | 0.438 | 0.428 | 0.505 | 0.488 | 5/32    | 0.164 | 0.150 |
| 5/16  | 1/2     | 0.500 | 0.489 | 0.577 | 0.557 | 3/16    | 0.195 | 1.180 |
| 3/8   | 9/16    | 0.562 | 0.551 | 0.650 | 0.628 | 7/32    | 0.227 | 1.210 |
| 7/16  | 11/16   | 0.688 | 0.675 | 0.794 | 0.768 | 1/4     | 0.260 | 0.240 |
| 1/2   | 3/4     | 0.750 | 0.736 | 0.866 | 0.840 | 5/16    | 0.323 | 0.302 |
| 9/16  | 7/8     | 0.875 | 0.861 | 1.010 | 0.982 | 5/16    | 0.324 | 0.301 |
| 5/8   | 1.5/16  | 0.938 | 0.922 | 1.083 | 1.051 | 3/8     | 0.387 | 0.363 |
| 3/4   | 1.1/8   | 1.125 | 1.088 | 1.299 | 1.240 | 27/64   | 0.446 | 0.398 |
| 7/8   | 1.5/16  | 1.312 | 1.269 | 1.516 | 1.447 | 31/64   | 0.510 | 0.458 |
| 1     | 1.1/2   | 1.500 | 1.450 | 1.732 | 1.653 | 35/64   | 0.575 | 0.519 |
| 1.1/8 | 1.11/16 | 1.688 | 1.631 | 1.949 | 1.859 | 39/64   | 0.639 | 0.579 |
| 1.1/4 | 1.7/8   | 1.875 | 1.812 | 2.165 | 2.066 | 23/32   | 0.751 | 0.687 |
| 1.3/8 | 2.1/16  | 2.062 | 1.994 | 2.382 | 2.273 | 25/32   | 0.815 | 0.747 |
| 1.1/2 | 2.1/4   | 2.250 | 2.175 | 2.598 | 2.480 | 27/32   | 0.880 | 0.808 |
| 1.5/8 | 2.7/16  | 2.438 | 2.356 | 2.185 | 2.686 | 29/32   | 0.945 | 0.869 |
| 1.3/4 | 2.5/8   | 2.625 | 2.558 | 3.031 | 2.893 | 31/32   | 1.009 | 0.929 |
| 2     | 3       | 3.000 | 2.900 | 3.464 | 3.306 | 1.3/32  | 1.138 | 1.050 |
| 2.1/4 | 3.3/8   | 3.375 | 3.236 | 3.897 | 3.719 | 1.7/32  | 1.267 | 1.171 |
| 2.1/2 | 3.3/4   | 3.750 | 3.625 | 4.330 | 4.133 | 1.11/32 | 1.396 | 1.292 |
| 2.3/4 | 4.1/8   | 4.125 | 3.988 | 4.763 | 4.546 | 1.15/32 | 1.525 | 1.413 |

- Dimensions in inches
- Available in Mild Steel and A2 & A4 Stainless Steel
- Other materials manufactured on requested