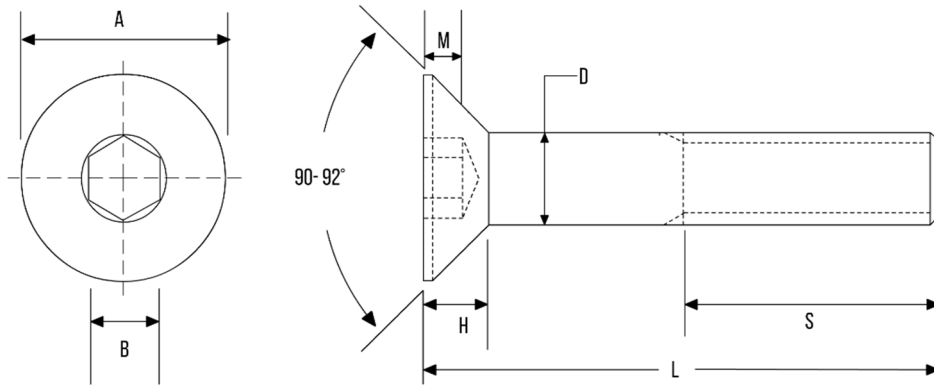


SOCKET COUNTERSUNKS SCREWS (IMPERIAL) – ASME 18.3



DIA	A	B	M (MIN)	S (MIN)
1/4	0.480 - 0.531	5/32 (0.156)	0.111	1.00
5/16	0.600 - 0.656	3/16 (0.188)	0.135	1.12
3/8	0.720 - 0.781	7/32 (0.219)	0.159	1.25
7/16	0.781 - 0.844	1/4 (0.250)	0.159	1.38
1/2	0.872 - 0.938	5/16 (0.312)	0.172	1.50
5/8	1.112 - 1.188	3/8 (0.375)	0.220	1.75
3/4	1.355 - 1.438	1/2 (0.500)	0.220	2.00
7/8	1.604 - 1.688	9/16 (0.562)	0.248	2.25
1	1.841 - 1.938	5/8 (0.625)	0.297	2.50
1-1/8	2.079 - 2.188	3/4 (0.750)	0.325	2.81
1-1/4	2.316 - 2.438	7/8 (0.875)	0.358	3.12
1-3/8	2.553 - 2.688	7/8 (0.875)	0.402	3.44
1-1/2	2.791 - 2.938	1 (1.000)	0.435	3.75

- Dimensions in inches
- Available in High Tensile Steel and A2 Stainless Steel
- Other materials manufactured on request